

BAND-OPTIONS INDICATORS

#R835A 0 — FITTED FOR W/B — MID & WIDE BAND VARIANTS

#R835B 0 — FITTED FOR M/B — ARE THE SAME .

#R835C 0 — FITTED FOR N/B

OPTIONS FOR THE TCXO TEMP STABILITY

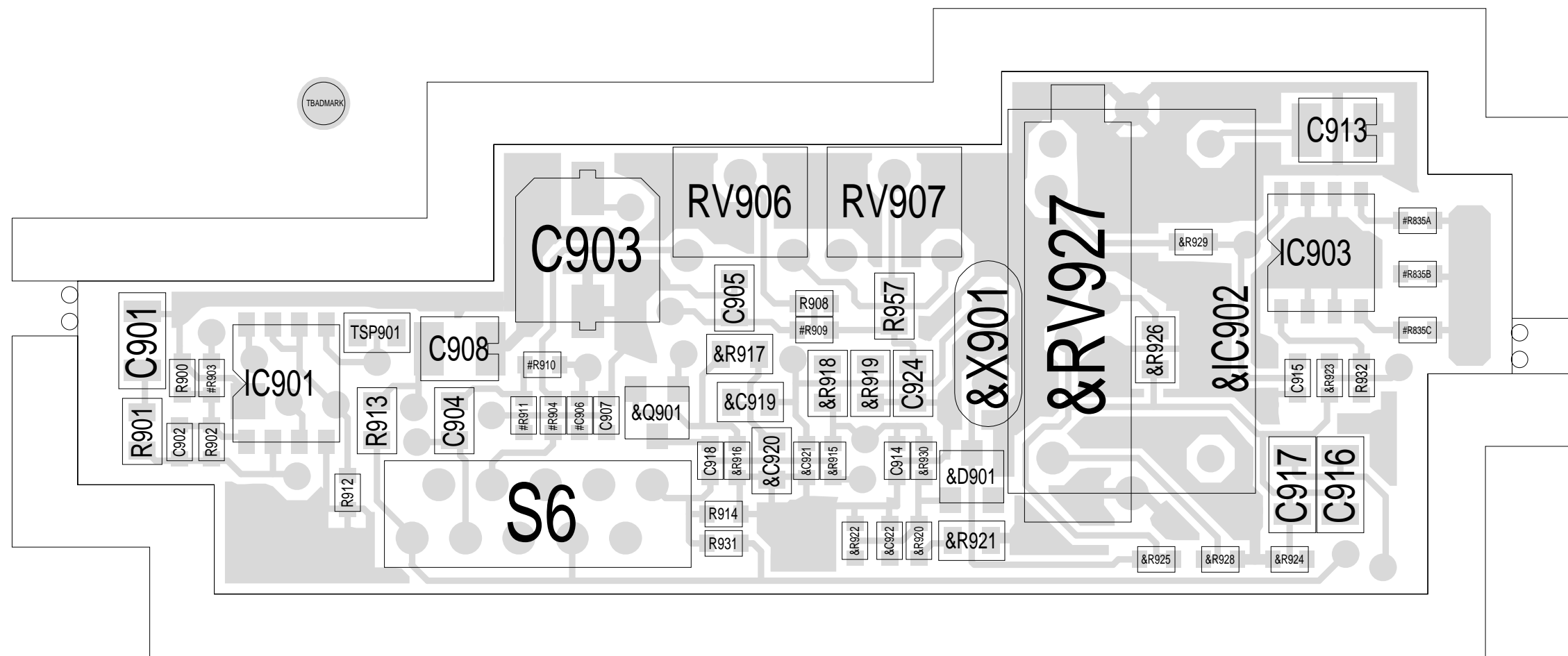
5ppm — XTAL -30 TO +60

3ppm — MODULE -30 TO +60
VXO2605A1

2.5ppm — -30 TO +75C VCTCXO
VXO2605A-1:1 (T2000-800)

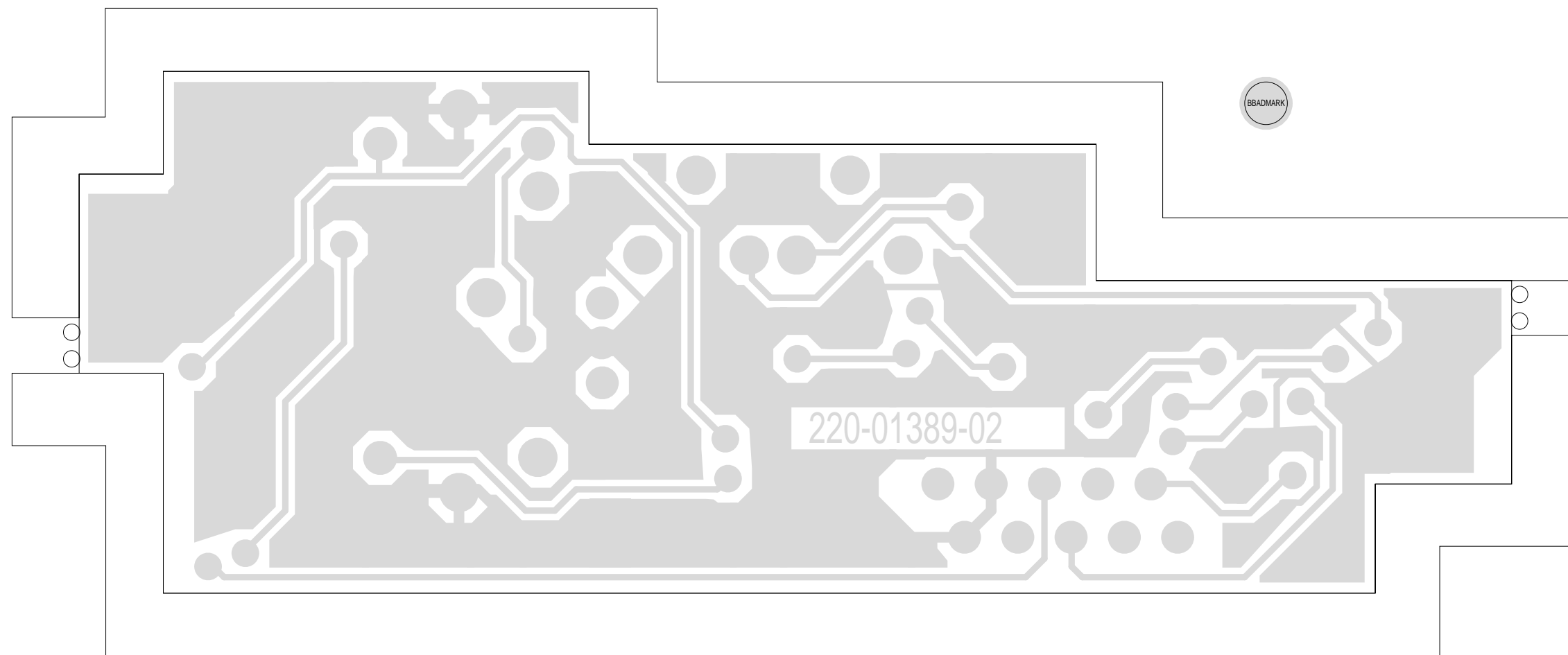
| | | | | | |
|---------|---------------------------------|-------|------|------|-----------|
| 02A | DELETE #C950/INTERIM CHIP | RPS | | | 14/04/97 |
| 02A | UPDATE C903 TO SMD | RPS | | | 07/04/97 |
| 02A | UPDATED INTERFACE RELAY PCB | RPS | | | 07/04/97 |
| 01A | ADD INTERIM CHIP PAD/RELAY CONN | RPS | | | 28/01/97 |
| REV/ISS | AMENDMENTS | DRAWN | CHKD | D.O. | APVD DATE |

| | | | | | |
|--------------------|-----------|------------|------------|-------------|-----------|
| © TAIT ELECTRONICS | | | | | |
| TCXO SERIES 2 | | | | | |
| T2000 | | | | | |
| PROJECT: | DESIGNER: | FILE NAME: | FILE DATE: | NO. SHEETS: | ID: |
| 220-01389-02 | RPS | 138902A | 14/04/97 | 1 | A 2.SC. 1 |
| SERIES 2 | RPS | 138902A | 14/04/97 | 1 | |



| | | | | |
|------------------------------------|-------------------|--------|----------|-------------------|
| TAIT ELECTRONICS | IPN: 220-01389-02 | ISS: 2 | ID: 1.TA | DATE: 21 May 1999 |
| TCXO-SERIES2 PCB LAYOUT - TOP SIDE | | | | |

Scale: 4:1 ; Rotation: 0 degrees



| | | | | |
|---------------------------------------|--------------|------|------|-------------|
| TAIT ELECTRONICS | IPN: | ISS: | ID: | DATE: |
| | 220-01389-02 | 2 | 2.BA | 21 May 1999 |
| TCXO-SERIES2 PCB LAYOUT - BOTTOM SIDE | | | | |

Scale:4:1 ; Rotation: 0 degrees